

# Spare parts list

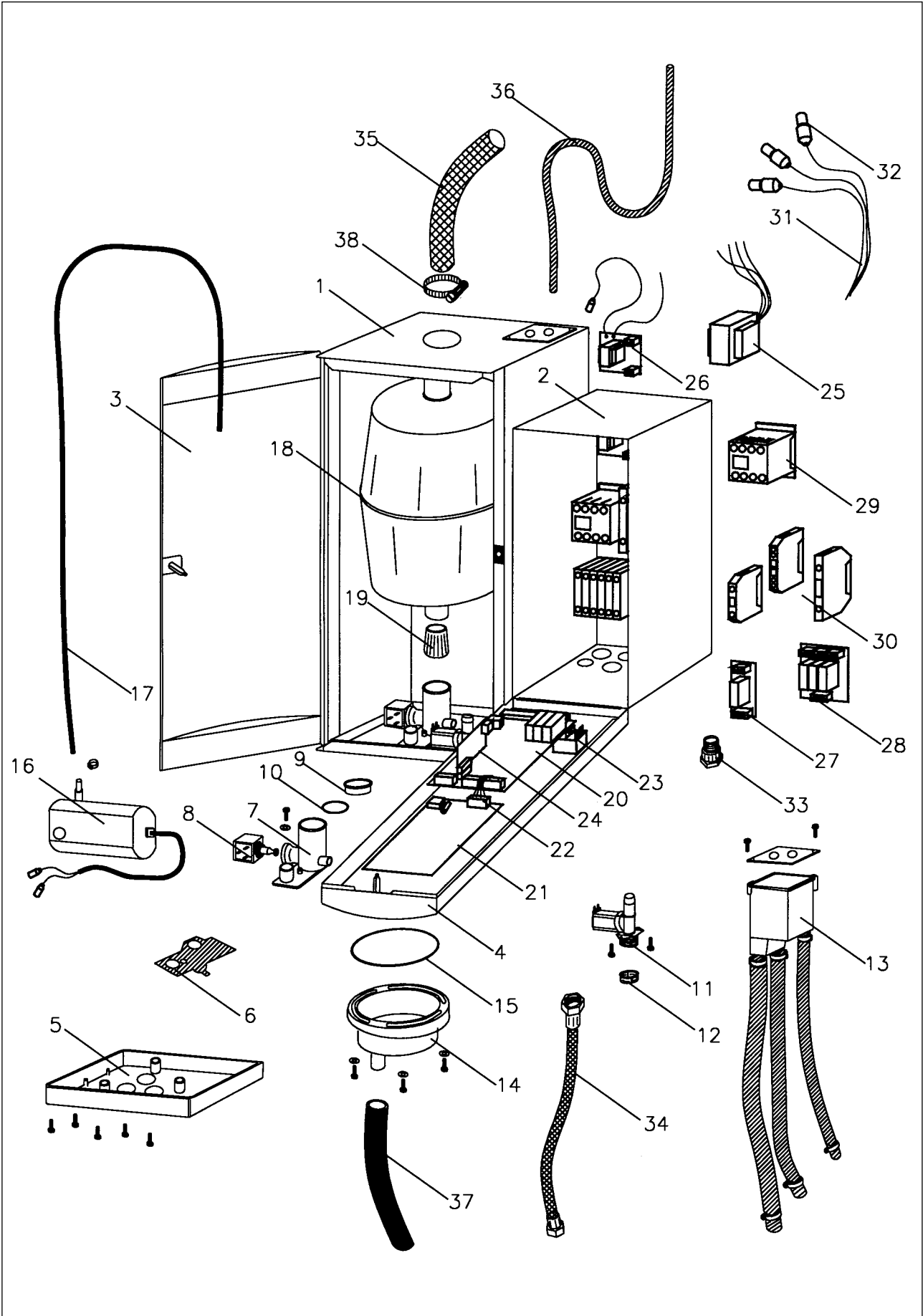
## Spare parts list AT 3000

NORDMANN  
ENGINEERING



**NORDMANN**  
ENGINEERING

**Spare parts list AT 3000**



Pos.	Art.-No.	Description
		<b>Housing:</b>
1	702 04 00	Metal cabinet type 4 kg/h
1	702 08 00	Metal cabinet type 8 kg/h
1	702 15 00	Metal cabinet type 15 / 23 kg/h
1	702 32 00	Metal cabinet type 32 kg/h single or double left
1	702 32 50	Metal cabinet type 32 kg/h double right
1	702 45 00	Metal cabinet type 45 kg/h single or double left
1	702 45 50	Metal cabinet type 45 kg/h double right
	333 40 07	Mounting frame for double units
2	903 02 63	Electric cabinet for types: 4., 8., 15., 2364, 3264
2	903 02 64	Electric cabinet for types: 2362, 3262, 4564
2	903 03 65	Electric cabinet for double units
3	701 00 01	Door type 4–8 kg/h with door lock
3	701 00 02	Door type 15–23 kg/h with door lock
3	701 00 03	Door type 32–90 kg/h with door lock
4	903 02 61	Keypad-panel AT 3000 (indicate language)
4	903 02 62	Keypad-panel AT 3000 2G (indicate language)
		<b>Water part:</b>
5	903 02 66	Plastic console with screws
6	334 70 20	Sealing foil for drainage valve body
7	903 00 48	Drainage valve body with screw + nipple for SC-System
8	903 00 28	Drainage operator (coil + plunger) 230 V 50/60 Hz
7+8	903 00 49	Drainage valve complete 230 V 50/60 Hz
9	903 00 45	Support ring for O-ring (bag with 5 p.)
10	903 06 00	O-Ring for drainage valve body (bag with 10 p.)
		<b>Water intake valves 230 V, 50/60 Hz, with screws:</b>
11	903 00 02	Yellow type 4 kg/h
11	903 00 11	Green type 8 kg/h
11	903 00 40	Blue type 15–23 kg/h
11	903 00 41	Pink type 32–90 kg/h
12	903 00 22	Filter for water intake valve
		<b>Water filling systems with screws per cylinder:</b>
13	903 00 71	Type 4–8 kg/h
13	903 00 72	Type 15–23 kg/h
13	903 00 73	Type 32–90 kg/h
14	639 20 38	Drainage cup vertical with screws
14	639 20 39	Drainage cup horizontal with screws
15	903 06 02	O-Ring for drainage cup (bag with 5 p.)
16	903 00 61	SC-System pump with hose clamp diam. 7 mm
17	903 00 62	SC-System hose with hose clamp diam. 7 mm

Pos.	Art.-No.	Description
		<b>Steam cylinders:</b>
18	639 15 10	Type 422, 1x230 V
18	639 15 11	Type 424, 1x400 V
18	639 15 12	Type 432, 3x230 V
18	639 15 13	Type 434, 3x400 V
18	639 15 20	Type 822, 1x230 V
18	639 15 21	Type 824, 1x400 V
18	639 15 22	Type 832, 3x230 V
18	639 15 23	Type 834, 3x400 V
18	639 15 30	Type 1532, 3x230 V
18	639 15 31	Type 1534, 3x400 V
18	639 15 40	Type 2362, 3x230 V
18	639 15 41	Type 2364, 3x400 V
18	639 15 50	Type 3262, 3x230 V
18	639 15 51	Type 3264, 3x400 V
18	639 15 60	Type 4564, 3x400 V
19	382 60 06	Drainage strainer
		<b>Electrical part:</b>
20	654 51 02	Supply and processor print UP2-24-AT 3000
21	654 51 05	Keypad and display print AT 3000
21	654 51 15	Keypad and display print AT 3000 for double units
22	649 72 40	Connecting cable with plugs
23	249 23 23	ON/OFF power switch
24	654 51 08	Proportional adaptor print
24	654 51 07	Step adaptor print
25	259 15 54	Transformer 230/24 V
26	654 00 01	Current transformer print
27	654 51 11	Remote indication with 1 relay
28	654 51 12	Remote indication with 3 relays
		<b>Contactors:</b>
29	249 23 14	K06 for type 422, 424, 432, 434, 834
29	249 23 00	D09 for type 824, 832, 1534
29	249 23 01	D25 for type 822, 1532, 2364
29	249 23 02	D32 for type 3264, 6464
29	249 23 03	D40 for type 2362, 4564, 9064
29	249 23 04	D50 for type 3232, 6462

Pos.	Art.-No.	Description
		<b>Terminals:</b>
30	249 22 00	Terminal 4 mm <sup>2</sup> type UK5N
30	249 22 12	Terminal 6 mm <sup>2</sup> type UK10
30	249 22 01	Terminal 10 mm <sup>2</sup> type UK16
30	249 22 02	Terminal 16 mm <sup>2</sup> type UK16N
30	249 22 03	Terminal 35 mm <sup>2</sup> type UK35
30	249 22 04	Earth terminal 4 mm <sup>2</sup> type USLKG4
30	249 22 13	Earth terminal 6 mm <sup>2</sup> type USLKG10
30	249 22 05	Earth terminal 10 mm <sup>2</sup> type USLKG16
30	249 22 06	Earth terminal 16 mm <sup>2</sup> type USLKG16N
30	249 22 07	Earth terminal 35 mm <sup>2</sup> type USLKG35
30	249 22 38	4-wire terminal 4 mm <sup>2</sup> type UDK4
30	249 22 16	Fuse holding terminal 4 mm <sup>2</sup> type UK 5-HESI
	903 10 34	Fuses F2 rated 1.6 A (10 p. bag)
	903 10 35	Fuses F1 rated 6.3 A (10 p. bag)
		<b>Power cable sets with electrode plugs:</b>
31	649 72 00	for type 422, 424, 824
31	649 72 05	for type 822
31	649 72 01	for type 432, 434, 832, 834, 1534
31	649 72 02	for type 1532, 2364
31	649 72 06	for type 2362
31	649 72 03	for type 3264, 6464
31	649 72 04	for type 3262, 4564, 6462, 9064
32	643 22 00	Cylinder electrode plug
33	903 10 64	Cable grommet PG 11 cable diameter 8 mm
33	903 10 65	Cable grommet PG 16 cable diameter 13 mm
33	903 10 66	Cable grommet PG 21 cable diameter 17 mm
33	903 10 67	Cable grommet PG 36 cable diameter 33 mm
		<b>Connection parts:</b>
34	903 05 09	0.6 m flexible water hose (water intake)
35	170 20 00	Steam hose diameter 22/29 mm 30 m roll
35	170 20 01	Steam hose diameter 35/43 mm 30 m roll
36	170 20 02	Condensate hose diameter 6/10 mm 25 m roll
37	171 20 02	0.5 m drain hose diameter 22/29 mm
38	903 05 02	Hose clamp set (10 p.) diam. 29 mm for types 4–8 kg/h
38	903 05 03	Hose clamp set (10 p.) diam. 43 mm for types 15–90 kg/h

Nordmann Engineering AG  
Hofackerstrasse 55  
CH-4132 Muttenz/Switzerland  
Tel. +41-61-467 76 66  
Fax +41-61-467 76 77

**NORDMANN**  
ENGINEERING

---