



# COOL BREEZE



**Cool Breeze is the smart choice for top air conditioning performance and the best value for money system around.**



Evaporative Air Conditioning





## Controllers

A range of controllers are available for down, side and top discharge single fan models.



### Wall Controller

- Simple to use
- Six speeds
- Off-Fan-Cool mode

### CA Series

- Designed for simplicity
- Unique one dial operation
- Variable speed fan



### CR Series

True Climate Control

- Automatic Temperature Control
- Digital Display

### CY Series

- 10 Fan Speeds
- Simple push button operation



## Specifications

Model		FS100	FS240
Motor - Variable speed	Voltage	220-240	220-240
	Watts	600	1000
	Amp Draw low/high	2.65/3.6	2.9/5.6
	RPM - low/high	600/1370	850/1410
Fan	Auswing II 40°	X	
	Powerflow Fixed Pitch		X
Pump - Quietflo	35 LPM	X	X
Filter Media - Celdek Flute size 7050/45	Number of Pads	3	3
	Size mm	1x830Hx930W 2x270Hx930W	3x830Hx950W
	Width mm	75	100
Cooling Capacity m <sup>3</sup> (Comcool Zone 2) ②		240	576
Design Air Flow (see note) ①	cmh	8000	18500
	cfm	4800	10700
	Lit/sec	2200	5100
Depth/Width mm		1090x470	1090x1090
Height mm		1090	1320
Operating Weight kg		67.5kg	92kg

## Through the Wall



The Cool Breeze S100 “thru-the-wall” air conditioner is designed to cool from 80 to 120 square metres - depending on the application.

It is ideal for offices in a multi-level situation where side wall only access is available. The S100 fits easily into any external wall and discharges air directly through a single wall diffuser. The S100 may also discharge into a duct adaptor for multiple ceiling outlets.

An efficient design means minimum energy loss and maximum air output per kilowatt of energy consumed.



# Twin Fan Evaporative Air Conditioner



## Wall Controller

- Simple to use
- Six speeds
- Off-Fan-Cool mode

## Single Phase Large Capacity



## Two Models FD400 & FD500

## Specifications

Model		FD400	FD500
Motor - Variable speed	Voltage	220-240	220-240
	Watts - Model TACEVA	2x750W	2x1000W
	Amp Draw low/high	2.7/3.85	2.9/5.6
	RPM - low/high	600-750/1350	850/1410
Fan	Auswing II 40°	X	
	Powerflow Fixed Pitch		X
Pump - Quietflo	35 LPM	2x	2x
Filter Media - Celdek Flute size 7050/45	Number of Pads	6	6
	Size mm	2x795Hx928W 4x795Hx645W	2x960Hx928W 4x960Hx645W
	Density mm	100	100
Cooling Capacity m <sup>3</sup> (Comcool Zone 2) <sup>②</sup>		960	1200
Design Air Flow <sup>①</sup>	cmh	28000	36000
	cfm	16500	21300
	Lit/sec	7800	10000
Dropper Duct size		1165x585	1165x585
Depth/Width mm		1630x1200	1630x1200
Height mm		995	1160
Height Above Dropper mm		745	910
Operating Weight kg		102kg	114kg

# CommercialAir Mobile

The CommercialAir Mobile evaporative air conditioner is a heavy duty model unit which has many practical applications.



## Simple to use

It's easy - plug it into a standard electrical wall outlet and connect to a water supply with a fixed hose connection. If a water outlet is not available, the Cool Breeze Mobile can be filled manually with a hose.

## Features

- 100mm thick Celdek pads ensure an unrestricted even airflow.
- Large capacity 100lt water tank with drain.
- Easy to move with heavy duty wheels, two with brakes.
- Robust powder coated steel frame.
- Fully adjustable multi-directional grille.
- Optional transport frame available.
- All polymer construction - no corrosion.
- Low maintenance.
- Quieter operation - special dimpled fan.

The CommercialAir Mobile has a direct drive fan coupled with a heavy duty motor, which ensures long term performance: No Belts or pulleys to maintain.



## Controller

- Six Fan Speed Control - Simply rotate the dial to choose your desired fan speed.
- Fan Only Operation - If required, switch off the COOL MODE to circulate fresh outside air.

## Specifications

Model	FM240 - MOBILE	
Motor	Voltage (V)	220-240
	Watts	1000
	Amp Draw - low/high current (AMPS)	2.9/5.6
	RPM - low/high SPEED (RPM)	850/1410
	Watts - low	680
	Watts - med (1050 rpm)	800
	Watts - high	1270
Fan	Powerflow Fixed Pitch	x
Water	Inlet Connection	1/2 inch BSP
	Drain (TAP)	Manual
	Tank Capacity (litres)	100
Filter Media - Celdek	Number of Pads	3
	Size mm	3 x 830 x 930
	Width mm	100
Cooling Capacity m <sup>3</sup> (Comcool Zone 2) <sup>②</sup>		576
Design Air Flows* <sup>①</sup>	cmh	18500
	cfm	11600
	Lit/sec	5400
Depth/Width mm		1130 x 1220
Height mm		1540
Shipping Weight kg		95
Ship Vol m <sup>3</sup> -		1.9
Operating Weight kg		195

# Why choose Cool Breeze?

For top air conditioning performance and the best value for money system around, Cool Breeze is the smart choice.

## The POWER of a Cool Breeze

### Rated Performance

Cool Breeze systems have been tested and performance rated. The amount of cooling produced by an evaporative air conditioner is largely dependant on the following factors:



The inside of a Cool Breeze unit

- Fan air flow
- Volume of Celdek Filter Media
- An Efficient Water Management System
- Overall System Design

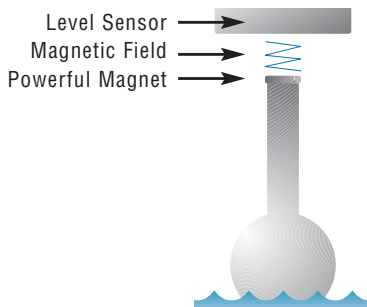
Compare our larger Celdek filter pads, superior fan performance and higher capacity motors. Cool Breeze systems have one of the highest ratios of air flow and Celdek filter media per square metre of floor area to be cooled, of any system on the market today.

### Magna-Sensor\*

#### • So Simple - So Reliable

The end of periodic water level adjustment. Cool Breeze systems have our very own automatic water level adjustment system. Accurate to within 1mm, no more sticky ball floats, or rubber washers to wear. No more electronic probes to become corroded. Our MAGNA-SENSOR is guaranteed never to require adjustment. The simplicity and accuracy of the MAGNA-SENSOR uses magnetic field technology to measure and regulate water flow and levels in the base.

(\*not mobile unit)



### Durable Polymer Construction

Manufactured by BASF, Luran-S is a premium grade and exceptionally tough polymer, specifically designed to withstand the most trying environmental conditions. This has been proven by numerous tests in the extreme deserts of Australia and the United States.

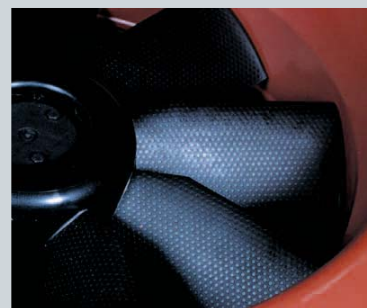
It's integral strength, resistance and durability to weathering, including UV degradation is unmatched by any other casing material. There is absolutely no corrosion that is common in metal casings.



### Superior Cool Breeze Fan Technology

Our powerful fan blades ensure maximum air flow with minimum noise. Our larger systems are fitted with our "Powerflow" fan blade. Note the "golf ball" like dimpled surface to reduce noise and increase efficiency.

One of the quietest systems in Australia - our testing confirms this. An efficient design coupled with the noise absorbing polymer construction and our advanced fan technology including the unique position of the fan all combine to make our Cool Breeze air conditioner the benchmark in our industry. Don't be misled by claims that drum fans are quieter.



All Cool Breeze units have a direct drive fan connected to a heavy duty motor, which ensures long term performance: No belts or pulleys to maintain.



## Lower Maintenance

Reduced maintenance means lower costs, longer life. Always ready to cool when required.

### Water Manager\*

#### Cool Breeze Systems Have a Water Management System Installed as Standard.

We believe that an Auto Drain and Clean Water System is a vital and necessary part of every air conditioning system, unlike some of our competitors who offer it as an optional extra.

(\*not mobile unit)

- **Clean and Dry Tank**

When your system is switched off, all water is drained from the tank. This means no mouldy smells or stale water.

- **Uses Less Water**

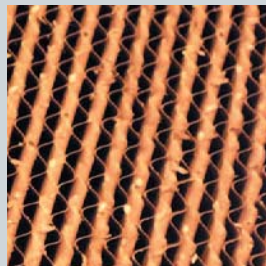
Unlike bleed-off systems which continually drain water in order to maintain water purity, the Cool Breeze Water Manager effectively minimizes water usage by only diluting and replacing the water in the base when necessary.

- **Cooler Air**

Cleaner pads and cleaner water means higher saturation efficiency and therefore cooler air.

- **Drain Valve**

The heart of the Cool Breeze Water Management system is our very own unique patented Drain Valve. Using the simple counterweight principle of a tank of water and leverage to open and close the valve, we feel that our drain valve could almost last forever. There is virtually nothing to break or wear. Unlike some of our competitors who use electric motors, solenoid valves and complex pressure systems, the design simplicity and reliability of our system is a first in our industry. The best ideas are usually the simplest.



Six units installed at Coolbinia Primary School, Perth Western Australia.

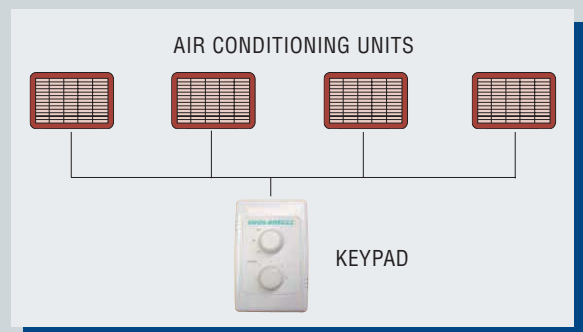


Duncraig Village Shopping Centre, Western Australia.

### Single Controller Option

This option provides full control of a series of air conditioning units all from the one keypad controller.

- Operation of multiple air conditioning units using one keypad
- Eliminates the need to run cable to individual control switches resulting in lower installation costs
- Convenience of only one keypad per group of units.

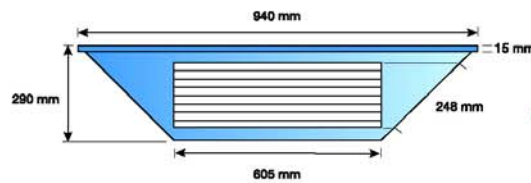


## Ceiling Plenums

### Model AGP2

Suits 550 x 550 dropper with optional Adaptor 2.

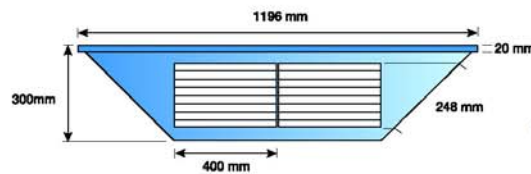
- White all-polymer (ABS) construction
- Blades - anodised aluminium
- Adaptors 2 & 3 designed to replace two standard T-Bar mounted ceiling tiles.



Adaptor 2

### Model AGP3

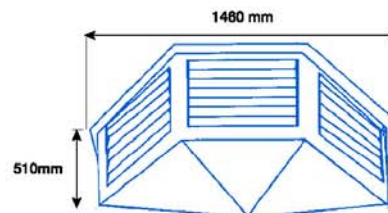
Suits 550 x 550 dropper with optional Adaptor 3.



Adaptor 3

### Model AGP4

Suits 1165 x 585 dropper with optional Adaptor 4.  
Cool Breeze twin fan unit.



Adaptor 4

## Specifications

Plenum	Free Area m <sup>2</sup>	Capacity m <sup>3</sup> at 6.5m/sec	Capacity m <sup>3</sup> at 7.5m/sec
AGP2	.62	14500	17000
AGP3	.83	19500	22500
AGP4	1.30	30500	36000

① Allows comparison with systems rated under the old "Air Flow" and "Air Change" method of sizing which were based on "Design" or nominal air flow ratings.

② Based on Comcool Zone 2 at 2.4m ceiling height. Comcool is an Air Group Australia design system used for sizing evaporative air conditioners in various regions of Australia. Consult your dealer for details.

Air Group Australia reserves the right to make product changes without prior notice.

Evaporative air conditioning cooling performance is affected when high humidity conditions exist. Installation and commissioning to manufacturer specifications, industry standards and state regulatory laws is the responsibility of the installer.



**TECNA**  
 Tecnología de Aislamientos y Climatización, S.L.  
 CI Río Miño, 7  
 Pol.Ind. El Nopal  
 28110 - Algete  
 Madrid  
 Tel:+34 916282056  
 Fax:+34 916282729  
 E-Mail:comercial@tecna.es  
 Web:www.tecna.es

*Exclusive  
 Distributor for  
 EUROPE*